

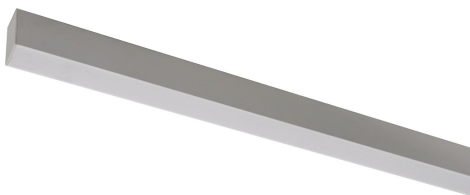
**DECOR S LED1X2600 J854 T830 OP LO4 • 1122087**


Image not found or type unknown



Product:	Decor S LED1x2600 J854 T830 OP LO4
Order code:	1122087
Family:	Decor S LED
Product group:	Aluminio profilio šviestuvai

**GENERAL DATA**

<b>Description:</b>	Surface mounted or suspended slim profile LED luminaire for in-line connection Light distribution type: direct Optical system: opal polycarbonate diffuser Housing: aluminium Colour: light grey (RAL9006S)
<b>Installation:</b>	On the ceiling, suspended (wire, cable and cap to be ordered separately) with L/LL options is designed for in-line connection. Push-in terminal, 3x2x2.5mm2
<b>Environment</b>	Indoor
<b>Application</b>	office, education, corridor, retail, public place, hotel

**ELECTRICAL DATA**

<b>Mains voltage:</b>	220-240V, 0/50/60Hz	<b>System power*, W:</b>	28.7
<b>Power factor:</b>	0.96	<b>Control gear:</b>	ECG on/off
<b>Integrated sensor:</b>	None	<b>Surge protection (L to N), kV:</b>	1
<b>Surge protection (L/N to PE), kV:</b>	2	<b>Inrush current (Imax/time):</b>	20A/ 161 µs
<b>Overvoltage protection:</b>	320V AC, 1h	<b>Connection:</b>	Push-in terminal, 3x2x2.5mm2

**LIGHTING DATA**

<b>Light source and cap, W:</b>	LED	<b>Light source included:</b>	yes
<b>Luminaire output*, lm(ta+25°C):</b>	2456	<b>System efficacy, lm/W:</b>	86
<b>CRI (Ra):</b>	80+	<b>CCT, K:</b>	3000
<b>SDCM:</b>	3	<b>Light Distribution:</b>	Wide-wide beam (C0-C180 plane 76 ...125 , C90-C270 plane 76 ...125 )
<b>Distribution Type:</b>	Direct	<b>Beam angle, °:</b>	109x109
<b>LED lifetime, h:</b>	50000/L80B10	<b>Ripple current (≤120 Hz), %:</b>	≤1

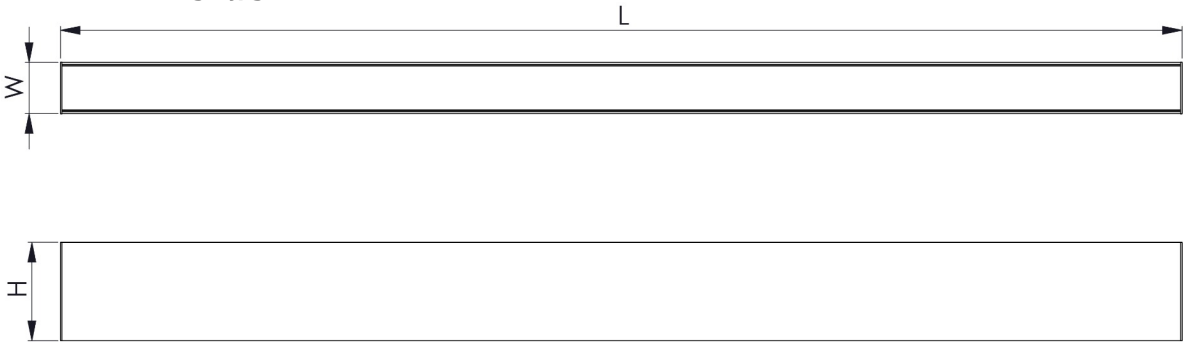
**TECHNICAL DATA**

<b>Net weight, kg:</b>	1.8	<b>Quantity in package, pcs:</b>	1
<b>Packaging volume, m3/pcs:</b>	0.0027	<b>Pallet quantity, pcs:</b>	230
<b>Dimensions, mm:</b>	858x40x75		

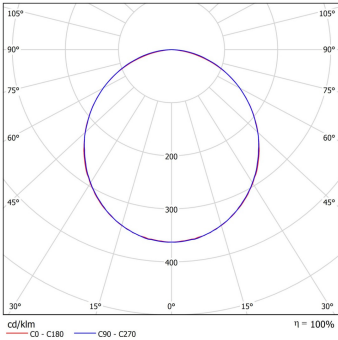
**STANDARDS**

<b>Operating temperature range, °C:</b>	ta 0...+35	<b>Protection class IEC:</b>	I
<b>Ingress protection code:</b>	IP40	<b>Mechanical impact resistance:</b>	IK05
<b>Glow wire test, °C:</b>	650	<b>EEC:</b>	F

Technical drawing (.jpg)



Light distribution curve (.jpg)



Note:

Tolerance range for optical and electrical data: ±10%. Values apply to an ambient temperature of 25 C. NORTHCLIFFE LIGHTING is constantly developing and improving its products. The right is reserved to change any product specifications without prior notification. Photos are for illustrational purposes only. The exact appearance of the product may vary depending on the monitor settings, options selected and other factors.