

CARINA LED2X1650 G941 T840 OP LT80 • 1109613

Product:	Carina LED2x1650 G941 T840 OP LT80
Order code:	1109613
Family:	Carina LED
Product group:	Diffuser and wall luminaires

GENERAL DATA

Description:	Surface mounted LED luminaire Light distribution type: direct Optical system: opal micro-linear polycarbonate diffuser Housing: steel Colour: white (RAL9003)
Installation:	On ceiling or wall. Push-in terminal, 3x2x2.5mm ²
Environment	Indoor
Application	office, education, corridor, public place, staircase

ELECTRICAL DATA

Mains voltage:	220-240V, 0/50/60Hz	System power*, W:	23.5
Power factor:	0.93	Control gear:	ECG on/off
Integrated sensor:	None	Surge protection (L to N), kV:	1
Surge protection (L/N to PE), kV:	2	Inrush current (I_{max}/time):	22A/ 191μs
Overvoltage protection:	320V AC, 1h	Connection:	Push-in terminal, 3x2x2.5mm ²

LIGHTING DATA

Light source and cap, W:	LED	Light source included:	yes
Luminaire output*, lm(ta+25°C):	3262	System efficacy, lm/W:	139
CRI (Ra):	80+	CCT, K:	4000
SDCM:	3	Distribution Type:	Direct
LED lifetime, h:	100000/L80B10	Ripple current (≤120 Hz), %:	≤2

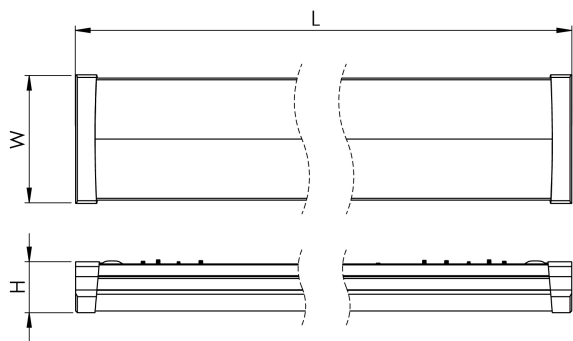
TECHNICAL DATA

Net weight, kg:	1.9	Quantity in package, pcs:	1
Packaging volume, m³/pcs:	0.0057	Pallet quantity, pcs:	180
Dimensions, mm:	622x146x60		

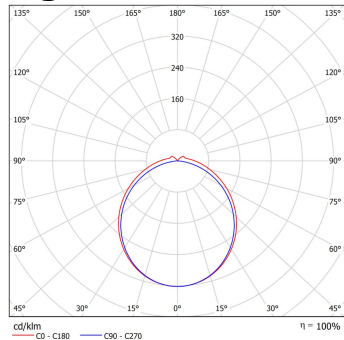
STANDARDS

Operating temperature range, °C:	ta -10...+40	Protection class IEC:	I
Ingress protection code:	IP44	Mechanical impact resistance:	IK04
EEC:	C	Certificates:	CE, UKCA, RoHS
Warranty:	3 years (5 years – see warranty Ts and Cs)		

Technical drawing (.jpg)



Light distribution curve (.jpg)



Note:

Tolerance range for optical and electrical data: $\pm 10\%$. Values apply to an ambient temperature of 25 C. NORTHCLIFFE LIGHTING is constantly developing and improving its products. The right is reserved to change any product specifications without prior notification. Photos are for illustrational purposes only. The exact appearance of the product may vary depending on the monitor settings, options selected and other factors.