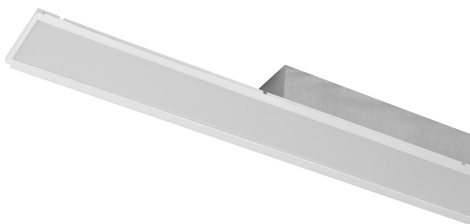


**LINE R LED 1X5950 G925 T840 MPRZ LT92 LO2 • 1109301**


Product:	Line R LED 1x5950 G925 T840 MPRZ LT92 LO2
Order code:	1109301
Family:	Line R LED
Product group:	Recessed luminaires

**GENERAL DATA**

<b>Description:</b>	Recessed mounted linear LED luminaire Light distribution type: direct Optical system: translucent micro-prismatic PMMA diffuser Housing: steel Colour: white, RAL9003
<b>Installation:</b>	In modular suspended ceilings. Push-in terminal, 3x2x2.5mm2
<b>Environment</b>	Indoor
<b>Application</b>	office, education, corridor, retail, public place

**ELECTRICAL DATA**

<b>Mains voltage:</b>	220-240V, 0/50/60Hz	<b>System power*, W:</b>	37.6
<b>Power factor:</b>	0.98	<b>Control gear:</b>	ECG on/off
<b>Integrated sensor:</b>	None	<b>Surge protection (L to N), kV:</b>	1
<b>Surge protection (L/N to PE), kV:</b>	2	<b>Inrush current (Imax/time):</b>	13A/ 50µs
<b>Overvoltage protection:</b>	320V AC, 48h	<b>Connection:</b>	Push-in terminal, 3x2x2.5mm2

**LIGHTING DATA**

<b>Light source and cap, W:</b>	LED	<b>Light source included:</b>	yes
<b>Luminaire output*, lm(ta+25°C):</b>	5983	<b>System efficacy, lm/W:</b>	159
<b>CRI (Ra):</b>	80+	<b>CCT, K:</b>	4000
<b>SDCM:</b>	3	<b>Light Distribution:</b>	Wide-wide beam (C0-C180 plane 76 ...125 , C90-C270 plane 76 ...125 )
<b>Distribution Type:</b>	Direct	<b>Beam angle, °:</b>	95x89
<b>LED lifetime, h:</b>	100000/L80B10	<b>Ripple current (≤120 Hz), %:</b>	≤5

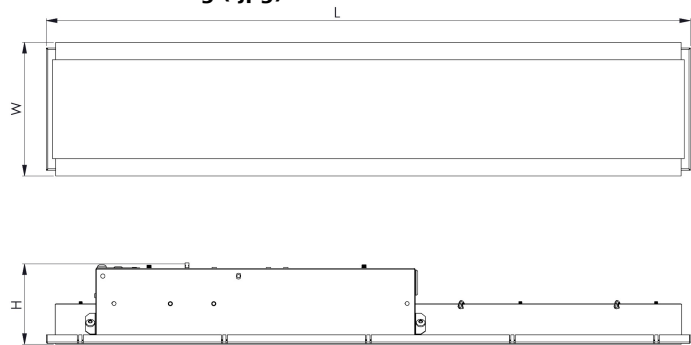
**TECHNICAL DATA**

<b>Net weight, kg:</b>	2.4	<b>Quantity in package, pcs:</b>	1
<b>Packaging volume, m3/pcs:</b>	0.0073		
<b>Dimensions, mm:</b>	1195x123x72		

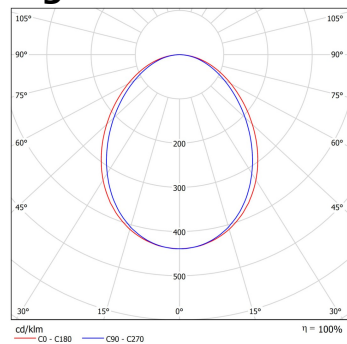
**STANDARDS**

<b>Operating temperature range, °C:</b>	ta 0...+35	<b>Protection class IEC:</b>	I
<b>Ingress protection code:</b>	IP40/20	<b>Mechanical impact resistance:</b>	IK02
<b>EEC:</b>	B	<b>Certificates:</b>	CE, UKCA, RoHS
<b>Warranty:</b>	3 years (5 years - see warranty Ts and Cs)		

Technical drawing (.jpg)



Light distribution curve (.jpg)



**Note:** Tolerance range for optical and electrical data:  $\pm 10\%$ . Values apply to an ambient temperature of 25°C. NORTHCLIFFE LIGHTING is constantly developing and improving its products. The right is reserved to change any product specifications without prior notification. Photos are for illustrational purposes only. The exact appearance of the product may vary depending on the monitor settings, options selected and other factors.